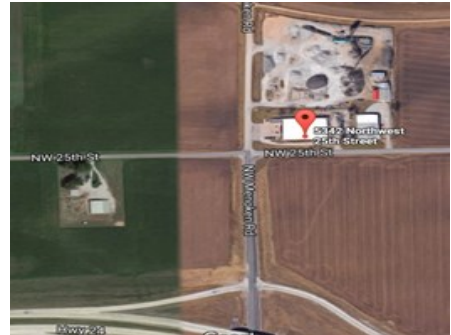


FOR SALE
5342 NW 25th St



- Location:** Corner NW 25th St. and Menoken Rd, one block north of US Hwy 24
- Jurisdiction:** Shawnee County
- Lot Size:** 93,000 S.F.—2 acres, partially fenced
- Zoning:** I2-Heavy Industrial
- Building Size:** 27,700 S.F.—1,100 S.F. office, 26,600 warehouse
- OH Doors:** 4—16 ft. allowing for drive thru
- Utilities:** Electric 480 amp—3 phase, gas, water, septic system
- Dock:** none, but capable
- Height:** 20 ft. sidewalls
- List Price:** \$435,000.00 (county appraisal value \$523,200.00)
- Comments:** Approximately 1/2 warehouse heated and cooled



CONTACT:
Dick Laird
Associate Broker
Associated Commercial Brokers Co.
1111 SW Gage Blvd., Suite 100
Topeka, KS 66604
(785) 228-9494
Email: laird@acbcomp.com
Website: www.acbcomp.com